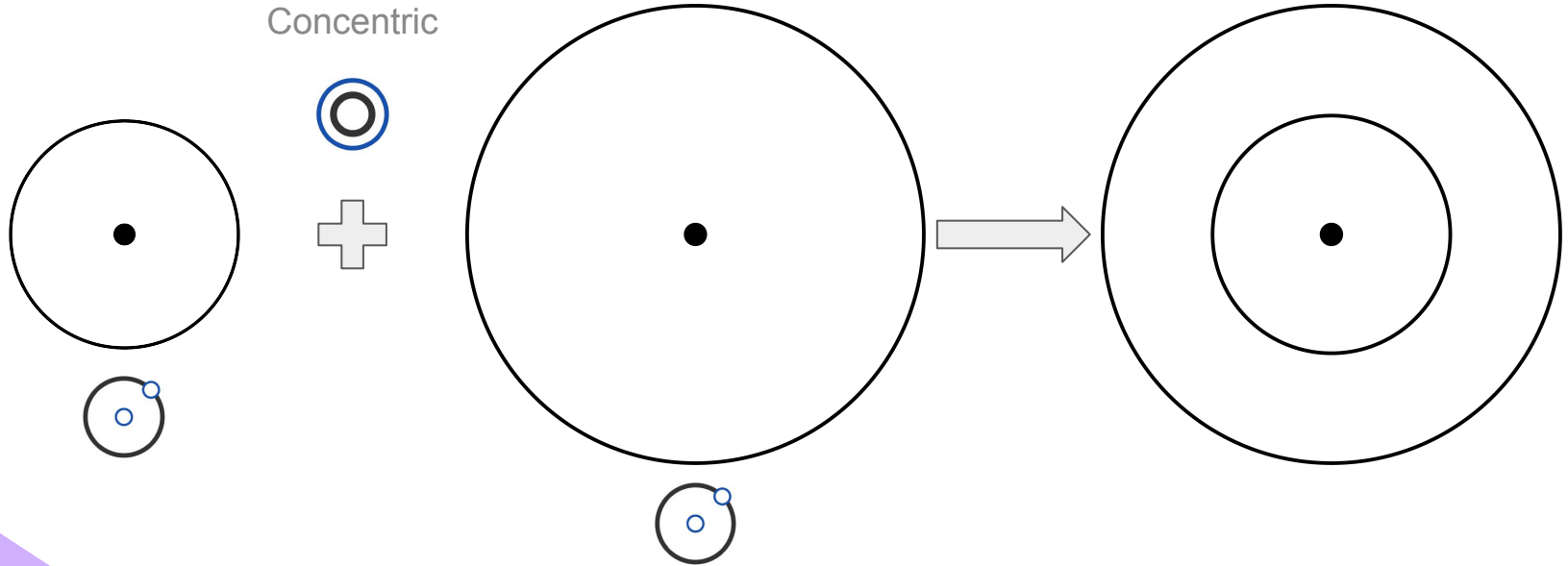


# Constraints - Building Shapes With Constraints



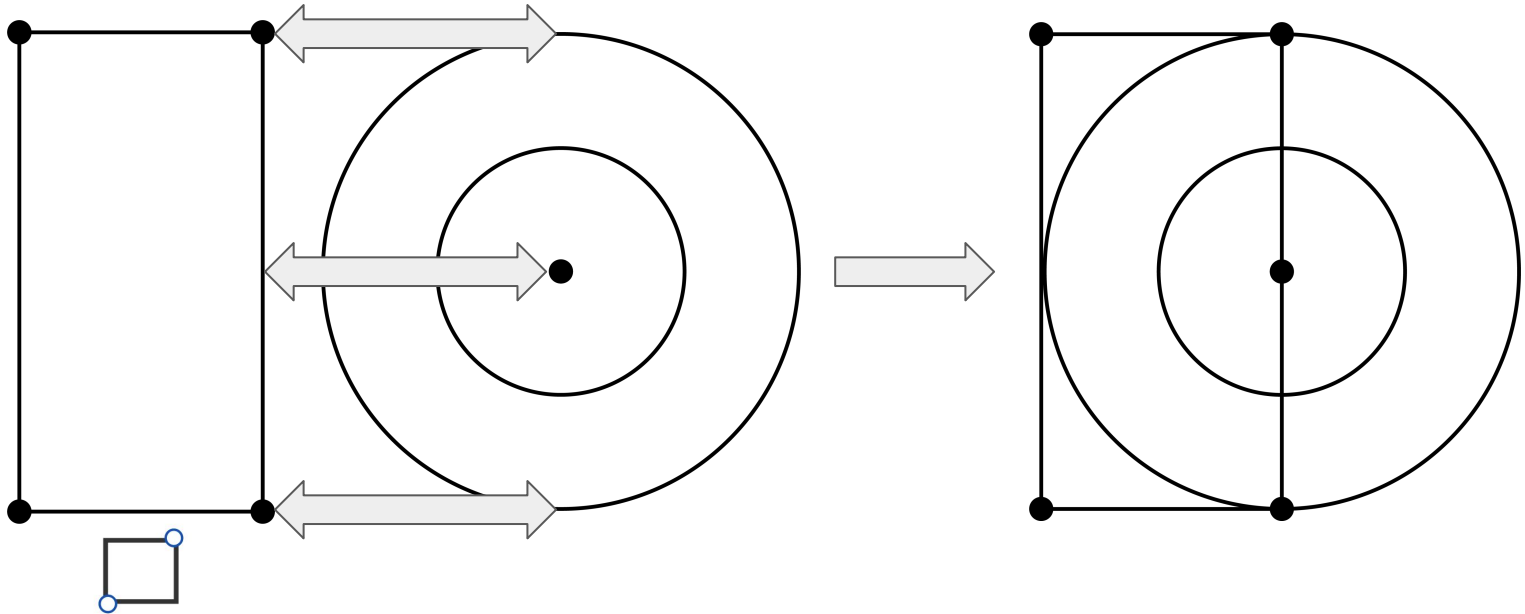
Concentric



# Constraints - Building Shapes With Constraints



Coincident

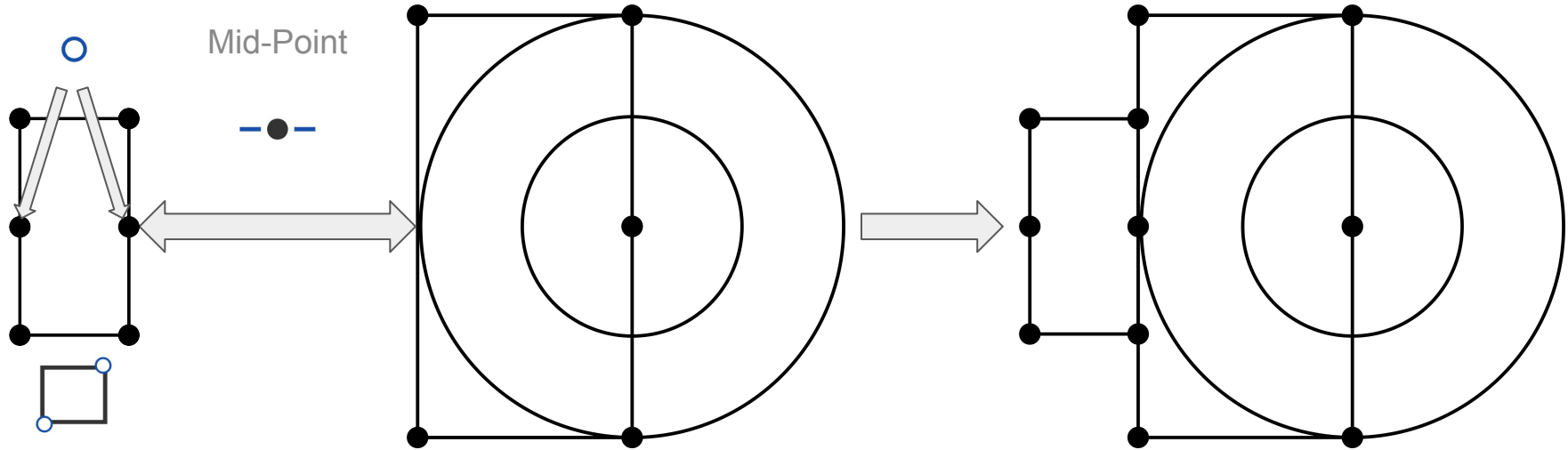


# Constraints - Building Shapes With Constraints

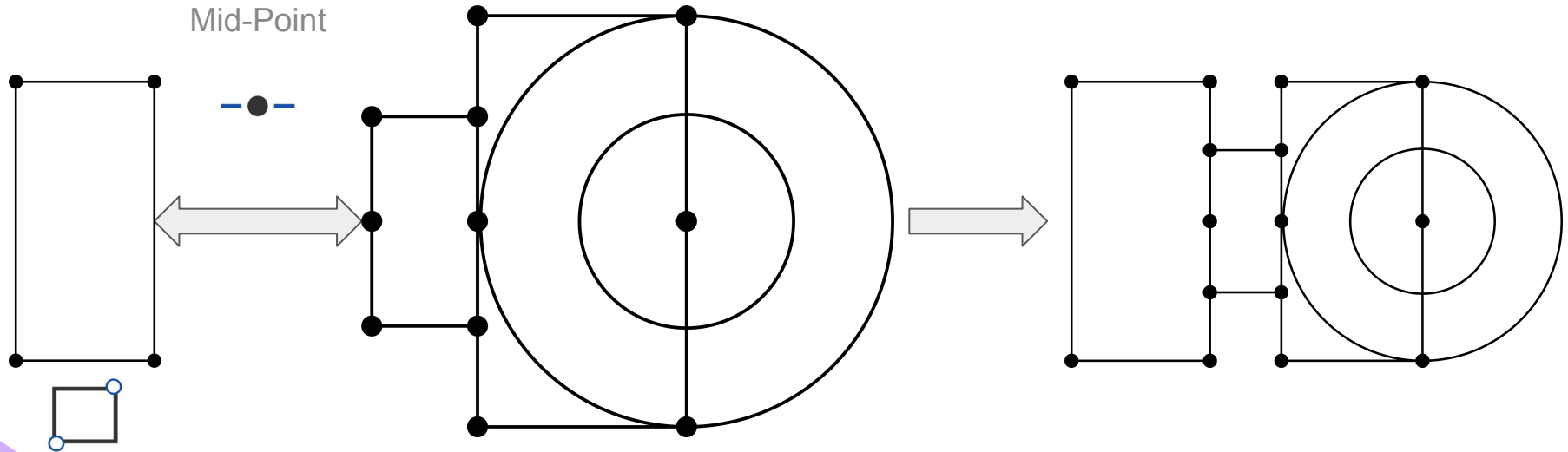


Add Point

Mid-Point



# Constraints - Building Shapes With Constraints



# Constraints - Building Shapes With Constraints

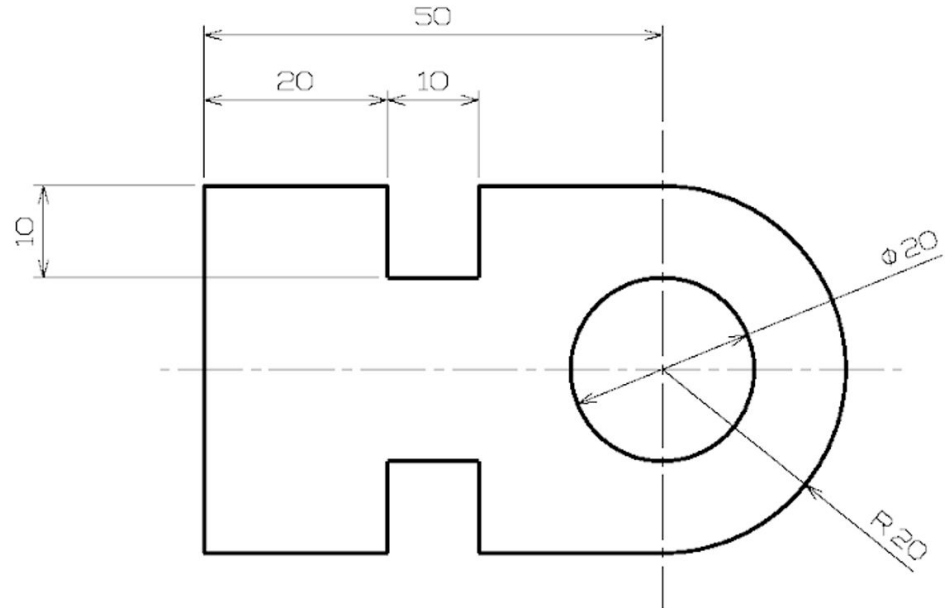


Now that everything is connected,  
use the dimension tool to add  
measurements

Dimension Tool



Click the edges where you want to  
dimension. If it's between two spots  
click one edge, then the next

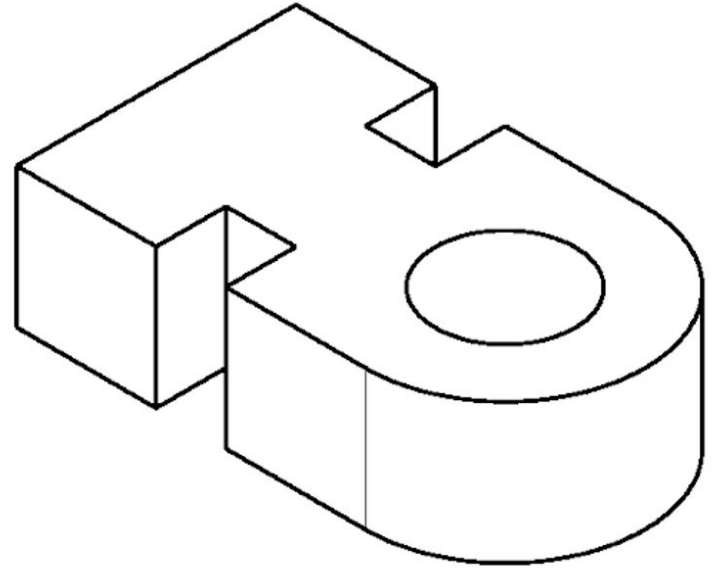


Measurements in MM

R = Radius



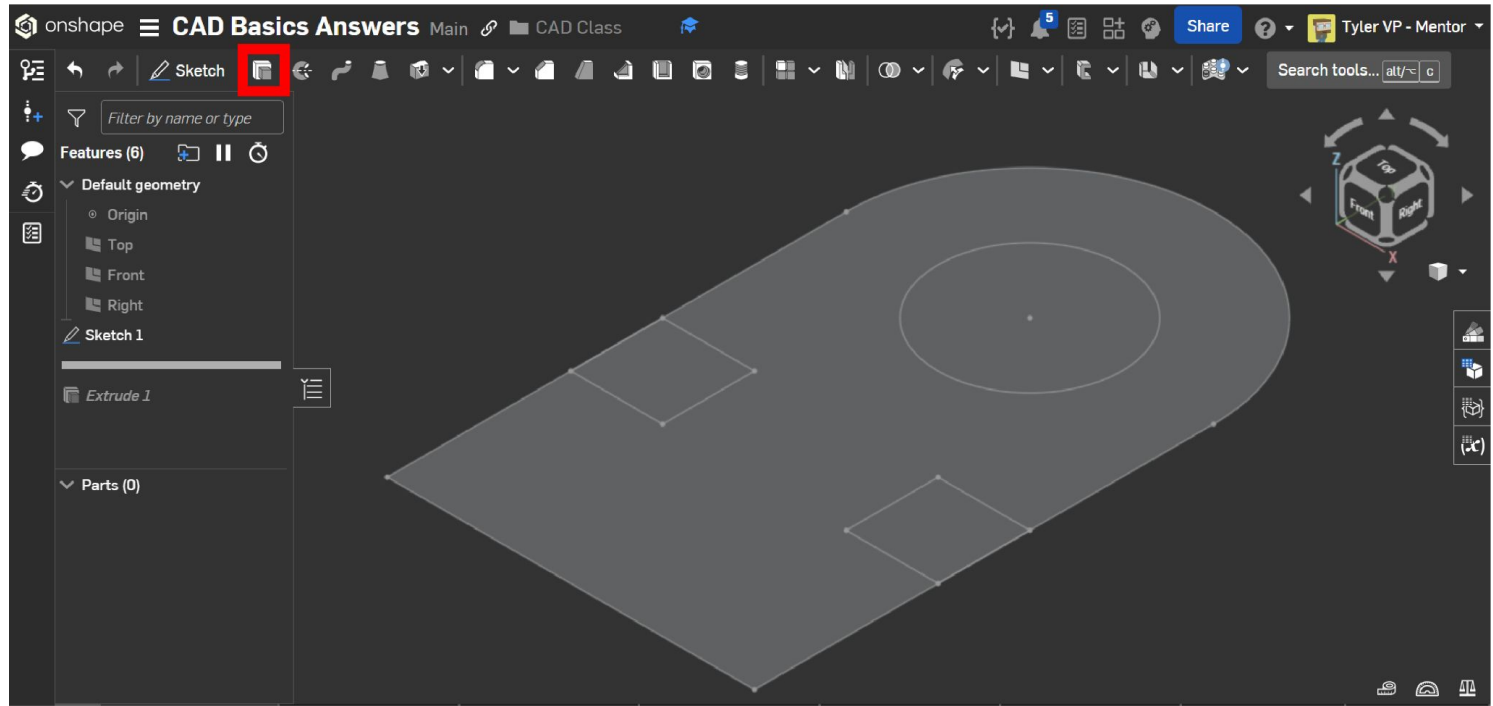
# 3D Features - Extrude (Add) Shape



# 3D Features - Extrude (Add) Shape



Select  
Extrude



# 3D Features - Extrude (Add) Shape



onshape CAD Basics Answers Main CAD Class

Share Tyler VP - Mentor

Filter by name or type

Features (7)

- Default geometry
  - Origin
  - Top
  - Front
  - Right
  - Sketch 1
  - Extrude 2
  - Extrude 1
- Parts (1)
  - Part 1

Extrude 2

Solid Surface Thin

New Add Remove Intersect

Faces and sketch regions to extrude

Face of Sketch 1

Blind

Depth 20 mm

Direction

Starting offset

Symmetric

Draft

Second end position

1. Select Shapes

2. Use Bind (Dimension)

3. Type in 20mm

20

